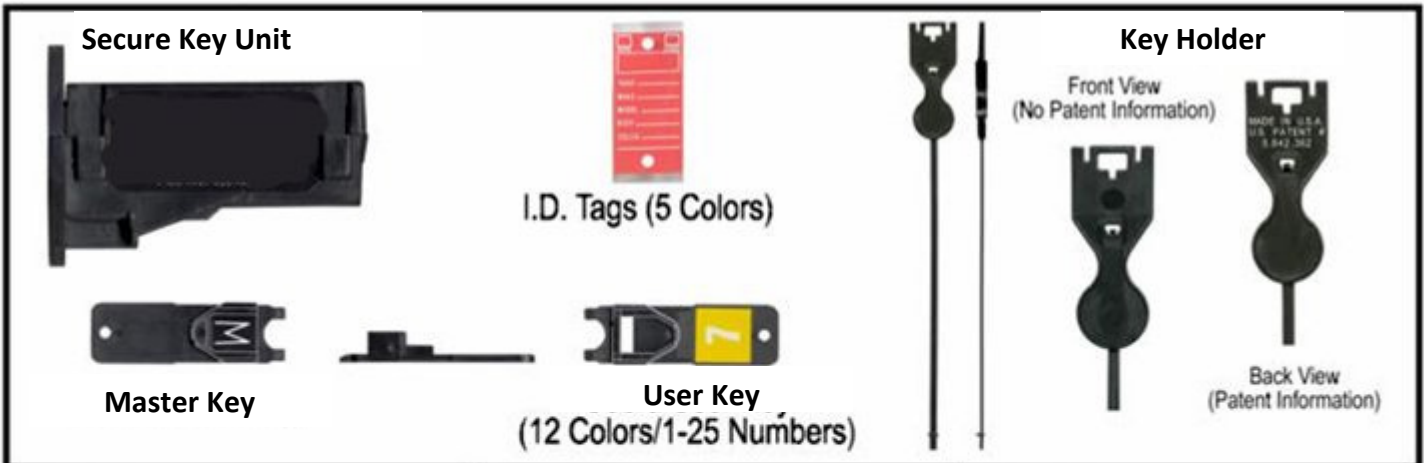




# Secured Key System User Guide



## Step 1

Insert your key(s) and I.D. Tag at the end of the key holder. (Fig.1) making sure the I.D. Tag is correctly displayed in front of your key(s).

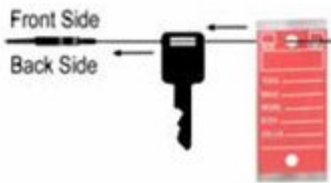


Figure 1

## Step 2

Secure your key(s) and I.D. Tag to the key holder by looping the bottom end up to the front face of the key holder and insert the tip into the allotted slot (fig. 2)

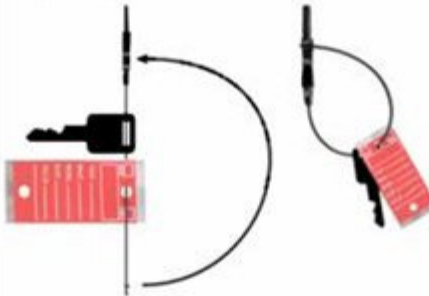


Figure 2

## Step 3

The key holder is locked into place (fig. 3) and ready for the key system Wall Board, Pedestal Cart, Roll Cart, Cabinet, or Licence Plate Holders.



Figure 3

## Step 4

Place the key holder underneath one of the key units and push firmly upward until a solid "click" is heard and felt (fig. 4)



Figure 4

## Step 5

To release the key holder from the key unit, take the Master Key or User Key and insert it into the front of the key unit. Press firmly until the key holder is released from key unit (fig. 5)

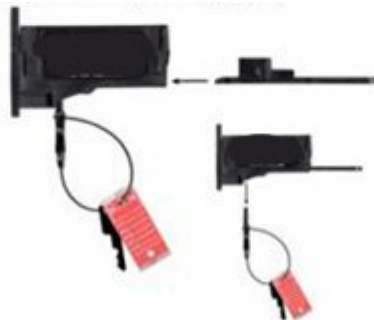


Figure 5

## Step 6

To release the user key from the key unit, re- insert the key holder back into the key unit until a solid "click" is heard and felt (fig. 6)



Figure 6



## TIME ACCESS SYSTEMS INC.

501-20170 Stewart Crescent, Maple Ridge, BC, V2X 0T4

Tel: 604-460-8670 Toll Free: 1-877-460-9602 Fax: 604-460-8690

[sales@timeaccessinc.com](mailto:sales@timeaccessinc.com)

[www.timeaccessinc.com](http://www.timeaccessinc.com)