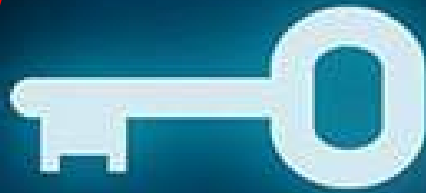


# Alert-Pro ///

RFID Key Exit Alert System



Proudly Distributed and Supported by  
**Time Access Systems Inc**

Information Brochure

**Never Risk Losing Your Valuable Keys /Access Cards Again!**



## Alert-Pro ///

### Key Exit Alert RFID Systems

With Alert-Pro You,ll always know if your valuable keys are being revoked from your premises!

*Don't gamble with your Valuable Keys!*

We have a low cost solution to your key exiting problems with our key exit alert system



[www.timeaccessinc.com](http://www.timeaccessinc.com)



# Alert-Pro RFID Key Exit Alert Systems

*Do you know where your keys are?*

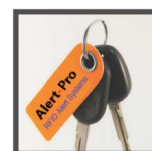


**ARE YOUR STAFF MEMEBERS LEAVING THE FACILITIES WITH YOUR VALUABLE KEYS!**

*Just think of what the cost of a mislaid key might be for your facilities!*

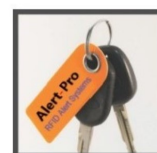
It could cost you thousands of dollars to re key or change the facilities locks not to mention the security issues that a misplaced/lost key can cause!

Our unique RF key tags are extremely sensitive the RFID detectors will always detect if your keys are leaving your facility



## How the Alert-Pro System works

The Way the RFID key exit alert system Standalone systems works is that the systems RFID readers/antenna are installed at your employee entrance/exit location If an employee member attempts to leave with your business or asset keys the system will automatically detect and sound a siren with a visual strobe light. The Way the RFID key exit alert system PC Networked systems works is that the systems RFID readers/antenna are installed at your employee entrance/exit location and implemented over the existing network. If an employee member attempts to leave with your business or asset keys the system will automatically detect and sound a siren with a visual strobe light. Plus the alert software would display an alarm and would identify what key was being removed from the premise! The key tags can be detected approx. up to 15 feet away and can easily be calibrated accordingly to the required distance.



## Ideal for the Gaming Industry



Ensuring security in the gaming and entertainment industry can be a daunting task that requires advanced solutions that address multiple needs. Whether at a Casino or Football game, there are thousands of staff members, visitors and equip-ment that need to be monitored from a central location. Exit Key Alert Systems provide facilities with the technology needed to solve this problem.

The RFID key tags can be attached to key rings in Casinos and configured to automatically trigger an alarm should the tagged key chain approach an exit. Many states require mandatory re-keying of slot machines if the keys are taken outside the building. By sounding the alarm before the keys leave the building, it can save the Casino tens of thousands of dollars in re-keying costs!

**With our key exit alert systems you'll always know if your keys have been removed from your premises**  
**For More Information Please Contact Us Toll Free 1-877-460-9602**



## With Alert-Pro You'll Never Risk Losing Your Valuable Keys /Access Cards Again!

### Time Access Systems

Alert-Pro Key Exit Alert Systems Sends real time notification and activates audible exit alarms if a key is taken outside of its authorized area

- Avoid threats to the security of your facility and its occupants
- Prevent the unintentional removal of a key
- Prevent key theft

### Monitor key location and know if a key is removed from an authorized area

The key exit system uses RFID technology to constantly send unique key tag signal data to wireless receivers which that are located at the facility entrance/exit areas, The RFID receivers will relay the data to the key alert system software that will provide real-time notification if a asset key is taken outside of an authorized area of the facility

### Alert-Pro Includes:

- Extensive customer support
- Easy to use software
- Tamper proof key tags
- Real-time audit records of key transactions
- RFID Detection Hardware
- Alarm relay connections and email notifications



### RFID Technology:

- Maintenance-free technology
- Save time and money with no key fob replacement or repair costs
- Real-Time key transaction recording
- Eliminate lost or misplaced keys resulting in expensive lost man hours and unnecessary added stress



**CASINOS/GAMING FACILITIES**



**COMMERCIAL BUILDING FACILITIES**



**LAW ENFORCEMENT FACILITIES**



**JAILS/CORRECTIONAL FACILITIES**

**System Compatibility:** Our Alert-Pro Key Exit Alert System is compatible line of key management systems, Key management systems electronic lockers, Asset locker systems and Guard tour system

**ALERT-PRO**  
RFID SOLUTIONS



# Alert-Pro RFID Key Exit Alert Infrastructure

The Key Exit Alert system includes the RFID Reader, Control Panel, Software, Key Fob and Antenna. RFID readers make up the backbone of the key exit alert system. The reader sends the key tag information along with identification detail to the optional software. Each reader will create discrete coverage key exit zones for alerting of keys being removed from premises

## Alert-Pro RFID Key Exit Alert Infrastructure



RFID TAG READER



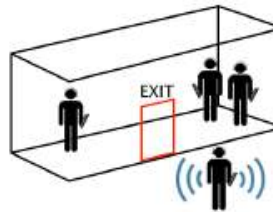
MOUNTING HARDWARE



RFID KEY TAG



PC ALERT SOFTWARE



# Alert-Pro Product Description and Specifications

**Product name:** Alert-Pro key exit alert system Radio frequency high-performance reader and alarm.

**Model:** Alert-Pro F-930

**Reader size:** 18 x 18 x 3" (US/Can size)/ 45 x 45 x 6 cm (European size)

**LED Alarm Size:** 4,8 x 2,9 x 1,4" (US/Can size)/ 12,2 x 7,3 x 3,6cm (European size)

**Package size:** 19 x 22 x 4,5" (American size)/ 48 x 55 x 11 cm. (European size)

**Gross weight:** 10 lb (American weight) / 4,5 kg (European weight)

**Product mode:**

Model Interface

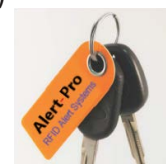
F-930 Standard RS232, NO relay, optional TCP/IP



**Product Description:** The F-930 is a high-performance integrated RFID UHF standard reader, combined with a red LED flash and an audible siren. This device is designed to prevent keys from leaving premises in all businesses, Casino's and organizations etc. The reader is usually placed above the entrance and when passing through the field of its action of objects equipped with a key tags, an alarm sounds. The Readers are easy to flush mount on standard industrial wall stud construction. Standard mounting kits for ceilings, dock doors, elevators, and other areas create superior read zones for static and dynamically moving tagged items. Each reader can be connected to the key alert software The software can run on any computer with Windows OS. This is intended for tracking of key exits. You can receive messages about unauthorized events on your computer The software can be supplied additionally and is not included in the standalone system.

## Features:

1. Intellectual system -false positives are impossible;
2. Protocol support 15018000-68, ISO18000-6C (EPC C1 G2);
3. 865~868MHz frequency band 902 ~ 928MHz (frequency customization optional);
4. FHSS or Fix Frequency transmission;
5. RF output power up to 30dbm (adjustable);
6. Built-in high performance 12dbi circular antenna with effect distance 12m\* (adjustable)
7. Low power dissipation with single +9 DC power supply;
8. Support RS232/USB, TCP/IP interface;
9. Siren volume adjustable up to 10Sdb ± 3db
10. Strobe LED frequency: 120 times/ min.



\*Effective distance depends on receiver/antenna, tag and environment.

# Alert-Pro Key Exit Alert Packaged Systems

The Alert-Pro Key Exit Alert system is available in two version kits The first version is a standalone system that includes: RFID UHF Antenna Reader Size, Power supply, mounting hardware, siren / strobe (red). 20 RFID key tags. The second is a network PC version that includes: RFID UHF Antenna/Reader, Power supply, mounting hardware, siren / strobe (red). 20 RFID key tags and PC alert software

## Packaged RFID System Kit #1

### Alert-Pro RFID Key Exit Alert Standalone System

The System Includes 1 x RFID UHF Antenna/Reader  
1 x Power supply, Mounting kit hardware, 1 x Siren and strobe (red). 20 X RFID key tags. 1 x Year Time Access Systems depot warranty



## Packaged RFID System Kit #2

Alert-Pro RFID Key Exit Alert PC Networked System can be connected to any computer using PC software The system is able to monitor several exits/entrances simultaneously. It has TCP/IP communication. Sends a alert message on the screen on the computer and sound and alarm. The System Includes 1 x RFID UHF Antenna/reader 1 x Power supply, Mounting kit with hardware, 1 x Siren and strobe (red). 20 X RFID key tags. 1 x Key Alert PC software 1, Desk top reader, 1 x Year Time Access Systems depot warranty



**Product name:** Alert-Pro F-930 Radio frequency high performance reader and alarm.

**Model:** Alert-Pro F-930

**Reader size:** 18 x 18 x 3" (US/Can size)/ 45 x 45 x 6 cm (European size)

**LED Alarm Size:** 4,8 x 2,9 x 1,4" (US/Can size)/ 12,2 x 7,3 x 3,6cm (European size)

**Package size:** 19 x 22 x 4,5" (American size)/ 48 x 55 x 11 cm. (European size)

**Gross weight:** 10 lb (American weight) / 4,5 kg (European weight)

**Gross weight:** Power adopter Input 110/120 VAC Output approx.18 VAC



**Available  
RFID Key Tags**

**Time Access Systems** offers design services for optimization and maximum scalability. Successful installations begin with a thorough review of the site, including testing within the planned coverage zones and exploration for potential interference conflicts and more. The end result is a customized system solution, which drives the configuration requirements

### RFID Key Exit Alert Systems Design

We recognize that even the most robust RFID devices cannot perform optimally within every environment and that some applications have countless variables, which need to be considered. Our team of experts has the background and experience to leverage when you need to minimize your time investment during installation and configuration.

**For More Information or Pricing Please Contact Us**



Distributed and Supported by  
**Time Access System Inc**  
Phone (604) 460-8670 Toll Free 1-877-460-9602  
www.timeaccessinc.com

**ALERT-PRO**  
RFID SOLUTIONS