

Time Clock Depot Canada



Division of Time Access Systems Inc.



Time Guardian Facial Recognition Face Scan Time/Attendance System

Affordable, User Friendly, Easy Set Up You'll Never Total Another Time Card Again!

Phone: (604) 460-8670 - Toll Free: 1-877-460-9602

The Time Guardian AFR-100 is a Facial Recognition Time and Attendance Terminal & Software package designed for facial scan for time and attendance of all employees. Features include Plug & Play installation wizard, 100 Employee capacity out of the box, multi-user for up to two concurrent users (upgrades for more users available) and the ability to setup Unlimited Number of departments, Pay policies/Schedules

AFR-100 Pro Facial Scan

Time Guardian AFT-100 Features

- Facial Recognition Face Scan Clock IN & OUT
- TCP/IP Ethernet Ready for Network Plug in
- Easily Upgradeable to 250 Employees
- Supports Multiple Languages
- Supports Unlimited Departments/Department Transfers
- Supports Unlimited Holidays
- Tracks Wages & Bonuses
- Archive/Restore Data options
- Two Levels of overtime
- Comprehensive Time Rounding Rules
- IN/OUT zones to control unauthorized overtime
- Includes pay categories for Sick and Vacation time
- Outputs useful management reports
- Automatic Data Polling and Time Sync.
- On demand "View Hours and Punches" at the clock
- User Friendly color display
- Export Data to Quickbooks, ADP, CBS, Gevity HR, PayChex, Paychex Paylink, Peach Tree, Powerpay or generic ASCII file
- One Year Warranty

You'll Never Total Another Time Card Again!



Special
\$1,495.00

Professional Time/Attendance

Benefits

- Automatically calculates employee hours, eliminating costly errors and reducing preparation time
- Eliminates "Buddy Punching"
- Eliminates cost of buying timecards or badges
- User Friendly interface
- Comprehensive management reporting helps control your company's largest expense
- Customize toolbars, screen layout and display
- Customizing rounding
- Accommodates a wide range of schedules, payroll rules, pay codes and reports

Eliminates Buddy Punching!

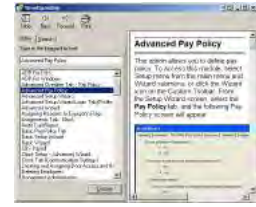
Punch data from the AFR-100 can be transferred to your PC via LAN (Ethernet), USB flash drive (sold separately), or RS232 serial cable (also sold separately). If by LAN, data can be retrieved automatically from the software.

Time Guardian AFR-100 Bio-Metric Facial Recognition Time and Attendance System



Specifications

- **Software Capacity:** 100 employees (upgradeable)
- **Dimensions:** Approx. 5.39H x 6.49W x 1.77D (inches)
- **Environment:** 32°F to 113°F (0°C to 45°C), 10 to 90% relative humidity, non-condensing Electrical: input 110 VAC 50/60 Hz Output 12 V 1.5A
- **Weight:** MTX-30 Proximity 1.29 lbs, MTX-30 MTX-30 Biometric 1.29 lbs, APR-100 Biometric 1.50 lbs.
- Bell Relay: 30 VDC 1A



Time Guardian Pro Time and Attendance Terminal Specifications

Your Time Guardian Pro system must have a Software Network Upgrade installed before you can install Proximity, Biometric Finger Print, or Facial Recognition Face Scan terminals (this upgrade is included in the kit). You can mix-and-match Proximity, or Biometrics terminals on a single system.

Terminals feature a large and bright **back lit LCD display** and can be connected to your PC or network via USB, serial (RS232) or Ethernet.

Each terminal's **built-in memory** can store up to thousands of transactions. An internal battery ensures punches stored in the terminal are retained even in the event of a power outage. You schedule the software to automatically poll the terminals and retrieve the stored transactions. Terminals include industry-leading 1-year manufacturer warranty

Time Guardian Pro Time System/Accessories Pricing



Additional MTX-30 Ethernet Biometric Facial Recognition Time Terminal for system expansion

\$1,395.00



Additional 25-Employee Capacity Upgrade

\$499.00



One year technical support for Time Guardian Pro Network Software Includes unlimited tech support during our normal business hours

\$299.00

Time Guardian Pro Optional Software Modules

The Time Guardian is an expandable time management software system, offering a number of sophisticated upgrade modules to further enhance the capabilities of the software. Below is a description of the available upgrade modules:

* **Advanced Overtime** - includes multiple levels of daily, weekly, and consecutive overtimes. Also includes unique range overtime for customized date range settings and unlimited pay codes to define.

- **Advanced Scheduling** - provides comprehensive scheduling options such as auto-sensing schedule assignment based on employee punches, rotation schedules for workers that work patterns (3 days on/4 days off), individual scheduling with multiple shifts per day, and advance schedule for time off. Also offers importing of schedules and multiple pay class rules.
- **Advanced Meal** - unlocks the power of defining complex rules for employee lunch and rest periods. Allows users to configure rules that track employee lunch and breaks. You can define fixed times or have the software auto-sense the periods. Includes lunch penalty rule and credits for unused time for use on other periods.
- **Advanced Rounding** - provides settings to snap the punches to the schedule start and end, rounding of hours by the day, week, and pay period. Also provide the ability to configure different rounding for each day of the week and holidays.
- **Web Interface** - provides a thin web-access client requiring no software to be installed. This includes employee configuration and employee global assignment through web access. This module also provides an employee portal, offering web punch-in, viewable previous punches, time sheets for hours allocation and schedule posting reports. The supervisor portal provides the ability to edit time cards, manage employee data, run reports, and adjust scheduling (optional Advanced Scheduling module also required).
- **Zone Differentials** - unlocks the capability of configuring premium pay rules that are based on the time of day. This module provides for multiple time windows, multiple qualification rules, and multiple awards for each qualification. Premiums are usually given to employees that work overnight or special schedules. The award rules are endless (additional hours/dollars, changing rates, setting labor levels, etc.).
- **Event Notification** - includes instant messaging profiles with notification based on pay code threshold, notification exception selection, and absence notification by threshold. This module also includes company and employee notification. This comes with an instant messaging system that is integrated with the application.
- **Benefit Time** - provides benefit tracking of hours for employee time off. This comes with the ability to import benefit time.
- **Advanced Pay Class** - features pay class tree, close pay period and default period for Company setup, pay period option for daily activities, holiday group, pay code templates, unauthorized hours report, and time card reporting. This module is needed for companies that have multiple pay rules for employees.
- **Advanced Labor** - provides 5 additional labor levels for tracking purposes. The levels are fully customizable with unlimited entries. This module also provides rate tracking for both cost rate (employee wages) and billable rate (invoicing customer), with customizable rules to calculate the rate based on the labor and employee.

For More Information or Assistance Please Contact Us



Time Clock Depot 

Time Access Systems Inc
Phone (604) 460-8670 Toll Free 1-877-460-9602

www.timeaccessinc.com

