

Time Clock Depot Canada



Division of Time Access Systems Inc.



Time Guardian MTX 30 Pro

Bio-Metric Time and Attendance System

Affordable, Simple and Secure Solutions in
Eliminating Time Theft

Phone: (604) 460-8670 Toll Free: 1-877-460-9602

The Time Guardian MTX 30 is a biometric Fingerprint reader Terminal and Software package designed to eliminate "buddy punching" through fingerprint recognition. Features include Plug & Play installation wizard, 100 Employee capacity out of the box, multi-user for up to 2 concurrent users (upgrades for more users available) and the ability to setup Unlimited Number of departments, Pay policies/Schedules

Time Guardian MTX 30 Pro Features

- Eliminate Buddy Punching
- Clock IN & OUT with a touch of the finger
- TCP/IP Ethernet Ready for Network Plug in
- Easily Upgradeable to 250 Employees
- Supports Multiple Languages
- Supports Unlimited Departments/Department Transfers
- Supports Unlimited Holidays
- Tracks Wages & Bonuses
- Archive/Restore Data options
- Two Levels of overtime
- Comprehensive Time Rounding Rules
- IN/OUT zones to control unauthorized overtime
- Includes pay categories for Sick and Vacation time
- Outputs useful management reports
- Automatic Data Polling and Time Sync.
- On demand "View Hours and Punches" at the clock
- Improved algorithm for better fingerprint reading
- Glass fingerprint reader
- User Friendly color display
- Export Data to Quickbooks, ADP, CBS, Gevity HR, PayChex, Paychex Paylink, Peach Tree, Powerpay or generic ASCII file
- One Year Warranty

Eliminates Buddy Punching!



**Special Package
Deal \$1,295.00**

Professional Time/Attendance

Benefits

- Automatically calculates employee hours, eliminating costly errors and reducing preparation time
- Eliminates "Buddy Punching"
- Eliminates cost of buying timecards or badges
- User Friendly interface
- Comprehensive management reporting helps control your company's largest expense
- Customize toolbars, screen layout and display
- Customizing rounding
- Accommodates a wide range of schedules, payroll rules, pay codes and reports

Punch data from the MTX 30 can be transferred to your PC via LAN (Ethernet), USB flash drive (sold separately), or RS232 serial cable (also sold separately). If by LAN, data can be retrieved automatically from the software.

Time Guardian MTX 30 Bio-Metric Fingerprint Time and Attendance System





MTX 30 Pro Package **\$1,295.00**

Complete Bio-Metric Time and Attendance Systems Package The package includes: MTX 30 Pro time terminal, Time Guardian 100 employee software, Ethernet com cable, power adaptor and a one year warranty



Why Use the Time Guardian Pro Automated Time Terminals? you prefer managing time and attendance with PC software

You want employees to punch IN/OUT by using Biometric Finger Print or PIN Entry

You have a local network using Ethernet cable or WiFi How to Punch Time Fast and efficient Punch IN/OUT using Biometric Finger Print scan



How to Prepare Hours for Payroll

Once data is transferred to your computer, Time Guardian software handles the hours reporting. It is comprehensive and has features that allow most any time and attendance policy you can think of. At the end of your pay period, simply export your reports tailored to your payroll provider.

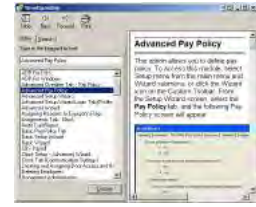


Options

- **Additional Terminals:** You can add as many as required
- **Admin Users:** Multi-User upgradeable (2 Users included)
- **Expandable Modules:** Time Guardian offers many optional Modules
- **Optional Web:** Available Web Interface Module provides web access for popular functions such as schedule and time card management

Specifications

- **Software Capacity:** 100 employees (upgradeable)
- **Dimensions:** Approx. 5.39H x 6.49W x 1.77D (inches)
- **Environment:** 32°F to 113°F (0°C to 45°C), 10 to 90% relative humidity, non-condensing Electrical: input 110 VAC 50/60 Hz Output 12 V 1.5A
- **Weight:** MTX-30 Proximity 1.29 lbs, MTX-30 MTX-30 Biometric 1.29 lbs, APR-100 Biometric 1.50 lbs.
- Bell Relay: 30 VDC 1A



Time Guardian Pro Time and Attendance Terminal Specifications

Your Time Guardian Pro system must have a Software Network Upgrade installed before you can install Proximity, Biometric Finger Print, or Facial Recognition Face Scan terminals (this upgrade is included in the kit). You can mix-and-match Proximity, or Biometrics terminals on a single system.

Terminals feature a large and bright **back lit LCD display** and can be connected to your PC or network via USB, serial (RS232) or Ethernet.

Each terminal's **built-in memory** can store up to thousands of transactions. An internal battery ensures punches stored in the terminal are retained even in the event of a power outage. You schedule the software to automatically poll the terminals and retrieve the stored transactions. Terminals include industry-leading 1-year manufacturer warranty

Time Guardian Pro Time System/Accessories Pricing



Additional MTX-30 Ethernet Biometric Finger Print Time Terminal for system expansion

\$1,195.00



Additional 25-Employee Capacity Upgrade

\$499.00



One year technical support for Time Guardian Pro Network Software Includes unlimited tech support during our normal business hours

\$299.00

Time Guardian Pro Optional Upgrade Software Available Modules

The Time Guardian is an expandable time management software system, offering a number of sophisticated upgrade modules to further enhance the capabilities of the software. Below is a description of the available upgrade modules:

* **Advanced Overtime** - includes multiple levels of daily, weekly, and consecutive overtimes. Also includes unique range overtime for customized date range settings and unlimited pay codes to define.

- **Advanced Scheduling** - provides comprehensive scheduling options such as auto-sensing schedule assignment based on employee punches, rotation schedules for workers that work patterns (3 days on/4 days off), individual scheduling with multiple shifts per day, and advance schedule for time off. Also offers importing of schedules and multiple pay class rules.
- **Advanced Meal** - unlocks the power of defining complex rules for employee lunch and rest periods. Allows users to configure rules that track employee lunch and breaks. You can define fixed times or have the software auto-sense the periods. Includes lunch penalty rule and credits for unused time for use on other periods.
- **Advanced Rounding** - provides settings to snap the punches to the schedule start and end, rounding of hours by the day, week, and pay period. Also provide the ability to configure different rounding for each day of the week and holidays.
- **Web Interface** - provides a thin web-access client requiring no software to be installed. This includes employee configuration and employee global assignment through web access. This module also provides an employee portal, offering web punch-in, viewable previous punches, time sheets for hours allocation and schedule posting reports. The supervisor portal provides the ability to edit time cards, manage employee data, run reports, and adjust scheduling (optional Advanced Scheduling module also required).
- **Zone Differentials** - unlocks the capability of configuring premium pay rules that are based on the time of day. This module provides for multiple time windows, multiple qualification rules, and multiple awards for each qualification. Premiums are usually given to employees that work overnight or special schedules. The award rules are endless (additional hours/dollars, changing rates, setting labor levels, etc.).
- **Event Notification** - includes instant messaging profiles with notification based on pay code threshold, notification exception selection, and absence notification by threshold. This module also includes company and employee notification. This comes with an instant messaging system that is integrated with the application.
- **Benefit Time** - provides benefit tracking of hours for employee time off. This comes with the ability to import benefit time.
- **Advanced Pay Class** - features pay class tree, close pay period and default period for Company setup, pay period option for daily activities, holiday group, pay code templates, unauthorized hours report, and time card reporting. This module is needed for companies that have multiple pay rules for employees.
- **Advanced Labor** - provides 5 additional labor levels for tracking purposes. The levels are fully customizable with unlimited entries. This module also provides rate tracking for both cost rate (employee wages) and billable rate (invoicing customer), with customizable rules to calculate the rate based on the labor and employee.

For More Information or Assistance Please Contact Us



Time Clock Depot 

Time Access Systems Inc
Phone (604) 460-8670 Toll Free 1-877-460-9602

www.timeaccessinc.com

