

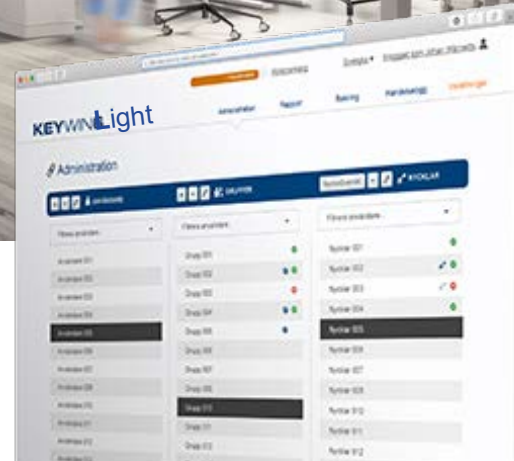


# **Key-Box**

## **9500 S Secure-Lock**

Info Brochure with US Pricing Page 6

**Never Lose Track of Your  
Valuable Keys Again!**



# **9500 S**

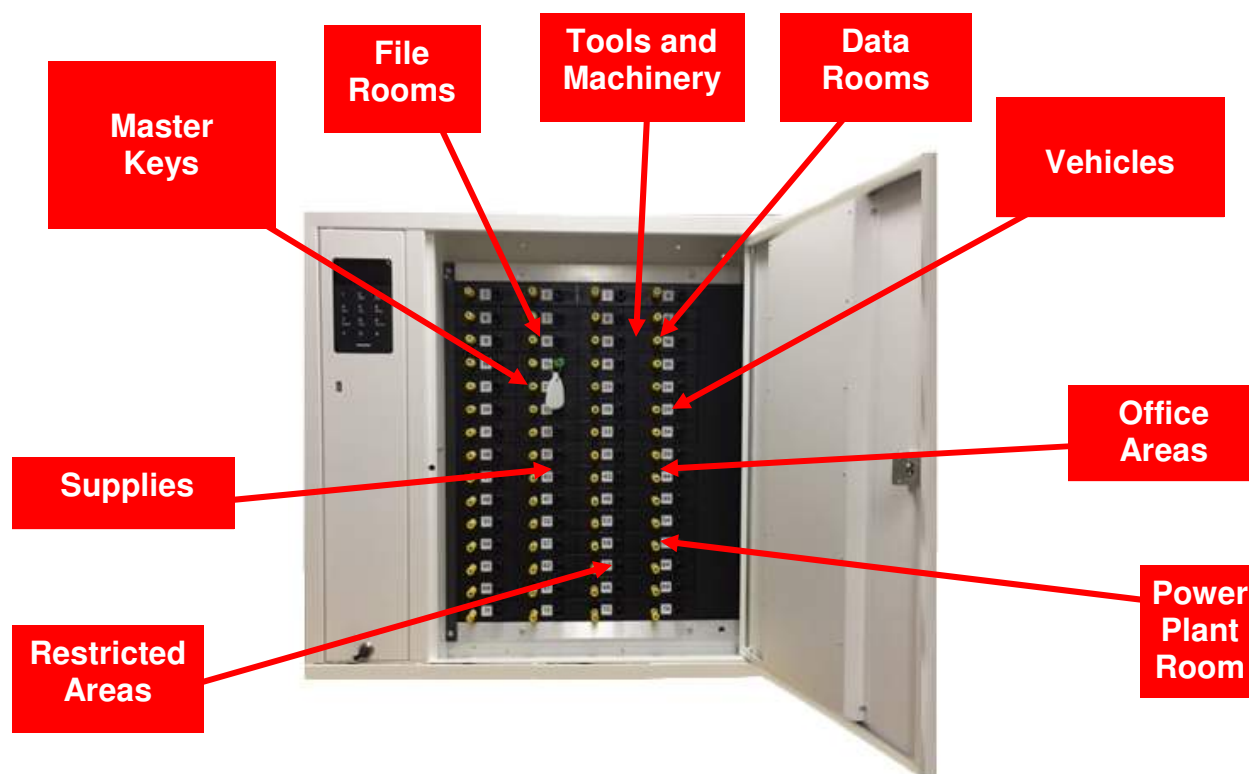
## **Secure-Lock**

**Key Management  
Solutions with  
Accountability  
24/7**



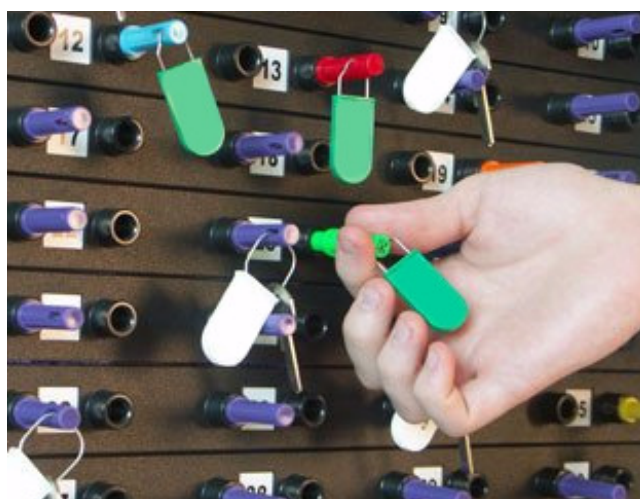
**Key Storage Solutions for All Sorts of Businesses/Organizations**  
[www.timeaccessinc.com](http://www.timeaccessinc.com)

# Key-Box Intelligent Key/Asset Management for all Types of Businesses and Organizations



***For Storing/Securing All  
Businesses / Organizations  
Facility/Asset Keys***

The Key-Box software provides a full audit trail and activity reporting, detailing who has accessed the cabinet and when. As a result, staff become more accountable and our customers have found that keys are returned at the end of shifts. This leads to reduce security requirements, with less loss, damage and liability



**9500 S Secure-Lock**

## Benefits

- Available with 75 individual Locking Key Holders
- Manage, control and report on the use of cabinet activities
- The systems identifies the authorized user that removed the keys
- Restrict access to specific times for certain staff members and contractors
- Improve shift start-ups by ensuring important keys are always in place and ready to use
- Completely remove the need for manual key issue
- Reduce losses and damage by making users fully accountable
- Fully scalable to accommodate up to 15 expansion slave cabinets with up to 1125 key holders
- 24/7 Audit trails of all key cabinet compartment access event

***Do you know where your valuable facilities keys are? With Key-Box 9500 S Secure-Lock key systems you'll always know where your keys are 24/7!***

**For Pricing Please see Page 6**

## Key-Box Basic 9500 S Secure-Lock storage cabinet systems

Smart solution for simpler security needs



# Key-Box

## 9500 S Secure-Lock

Computerized Key Storage Cabinet  
Available with 75 individual  
Locking key holders



Key-Box 9500 S is powered by  
KeyWin Light PC USB Software

## Key-Box Computerized Key Management System

*Each key is individually locked in place in the Secure-Lock key holder lock and only released to authorized users with their assigned access ID key pegs*

With our **Secure-Lock** key system, management and staff will always know who has removed the facility keys and who the users are that have the key/keys etc. Thus saving a lot of time if another user requires a certain facility key or keys that are not in the cabinet or wall board key system.

The way our **Key-Box Secure-Lock 9500 S** key systems work is an authorized user with their pre-assigned **PIN** enters their **PIN** on the key cabinet. The door would automatically open displaying all the keys that are individually locked in the key locking holders. The user would insert their **ID** key into the key lock holder with the key/keys they require once the user **ID** key is inserted into the key lock holder the keys are unlocked and released. The key lock holder would then keep the user **ID** key lock until the user returns the keys back, when the user returns the keys they would simply enter their pre-assigned **PIN** on the key cabinet and insert the key holder with the attached keys back into the key lock holder where their **ID** key is locked up. Once the returned key is locked in place. The key holder lock would then release the user **ID** key

The 9500 S Secure-Lock system can be further expanded in the future as needs arise up to 1,125 key holder capacity with available 9500 EC Expansion slave cabinets that connect to the 9500 S Series cabinet, each slave cabinet can hold up to 75 locking key holders, up to 15 expansion slave cabinets can be added to the 9500 S Series master cabinet

**For Pricing Please See Page 6**



## Never Lose Track of Your Valuable Keys Again!



A smarter way to keep track of facility keys. The **Secure-Lock** innovative key systems comes ready to use. Simply snap keys together on a locking secure peg, tamper proof ring and place into key holder. Keys can only be removed with an access key peg. Once an access key peg is used to release the facility keys the access key peg cannot be removed until the facility's keys are placed back into the board. Assign access key peg to authorized users and service people. You'll always know who has the facility keys by looking at the personalized access key peg. At the board a master key will always remove all keys from the board incase of an emergency. The Secure-Lock key holders and cabinets are built from the highest quality materials for long lasting operations.

## Secure Solutions for Securing your Valuable Keys



## User Friendly

After installing Secure-Lock Key System

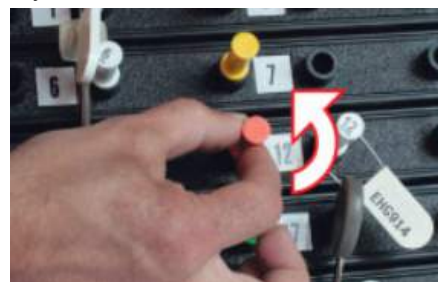
- You will always know who is in possession of each key as they are provided with a users identification access ID user peg.
- The keys may only be removed by authorized personnel with their access ID user pegs



The keys are attached to the system by an anti-tamper security key holder



The user access peg is inserted to remove the desired key from the system



By turning the access peg the system is activated and the desired key is released



The user access peg retained on the board will identify the user who has not returned the key

## Affordable Secure Key Management Solutions

For Pricing Please See Page 6

# KeyWin-Light USB PC Key Management Software

## KeyWin Light Software

### Flexible overview for your key system and locker system

KeyWin Light is a software that can be used with the System series for key cabinet and value box. You obtain monitoring and control by plugging a USB flash drive into the cabinet using a service code. The event log is also downloaded to the USB flash drive, which is then processed on a computer.

It is simple to add, delete or edit codes as well as to look up information in the event log and then to upload them to the cabinet again via the USB flash drive.



## Extremely easy to set up and use

### KeyWin Light features



#### Easy to use

The administrator determines the members of staff who have access to a specific key by entering which user can log into the key cabinet or value box with his or her personal code



#### USB flash drive

Transfer your settings easily via a USB flash drive and enter them in the key cabinet or value box



#### Time Channel

Limit a groups use by setting a time channel. The group's keys are available when the time channel is active



#### Event Log

Export the event log from the key cabinet or value box to the PC program using the USB flash drive



#### Countdown Function

This function determines how many times the user can enter the key cabinet, value box or compartment



#### Export

You can always make a backup of the event log. Either via a CSV file which you can import to Excel or direct to a PDF file



#### Intelligent search functions

The search function finds everything in KeyWin, since it searches on files, email, contacts, groups, alarms etc. as fast as you type



#### Cabinet settings

In the settings, you set the number of doors you have in your system. You also choose a service code for program, key cabinet or value box



#### Back up

You can easily create backups for the entire key management program. They are automatically named with the date and time it is just as simple to restore the backup as it is to create it



## Key-Box 9500 S Secure-Lock

Powered by

**KeyWin Light**

USB PC Software



## 9500 S Secure-Lock US Price List

### Key-Box 9500 S Secure-Lock Key Management Systems



#### Secure-Lock Key Management System Cabinet

9500 S 75 Key Systems

The system includes cabinet with lock/key 75 yellow secure locking key pegs, 15 x red users ID Access Pegs, 75 x Anti-Tamper Rings, KeyWin Light PC USB Software, Battery Back Up

Cabinet Dimensions: 30"H x 28"W x 6"D

**\$4,495.00 each**



#### 9500 EC Expansion Slave

Cabinet with 75 locking

Key holders

75 Key **\$3,495.00**

#### \*Note

up to 15 Expansion Slave Cabinet can be connected and configured to the 9500 S Master Cabinet

### Secure-Lock 9500 S Accessories

#### Secured Locking Key pegs

Are used to secure the keys onto the secure wall board system the key control pegs. Available in standard yellow

**\$69.50/ Package of 10 yellow pegs**

#### Access Users ID Key pegs

Are used for authorized users to have access and release the keys from the secure wall board, Access users ID pegs. Available in standard red

**\$89.50/ Package of 10 red pegs**

#### Master Access Pegs

Are used for authorized managers to have access to all of the keys in the wall board key system, useful when moving many vehicles at once

**\$39.95 each**

#### Secured anti-tamper key rings

Anti-tamper key rings are used to secure keys to the locking key pegs in the key manager key system, they are specifically designed to promote the correct use of the system and ensure the greatest possible control of your keys, keys and rings are attached to the locking key pegs. The key rings can also hold an optional info tag on the rings such as number etc.

**\$69.75 / Package of 25 key rings**



**Secure-Lock**

Key Management Systems

For more information about what Key-Box key and asset management systems can do for you, please contact us at (604)460-8670 / Toll Free 1-877-460-9602 or visit us at [www.timeaccessinc.com](http://www.timeaccessinc.com)

Distributed/Supported in North America by



**Time Access Systems Inc**

Phone **(604) 460-8670** Toll Free **1-877-460-9602**

[www.timeaccessinc.com](http://www.timeaccessinc.com)

**Key-Box**